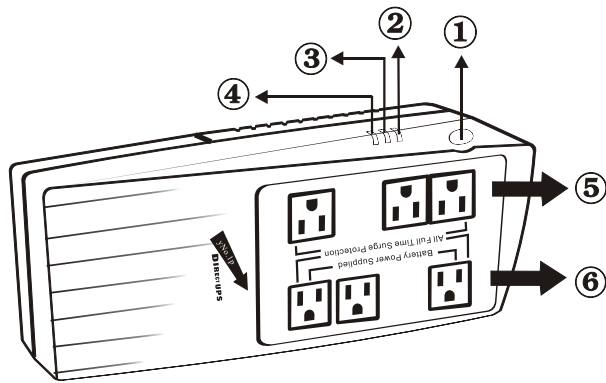




System Description

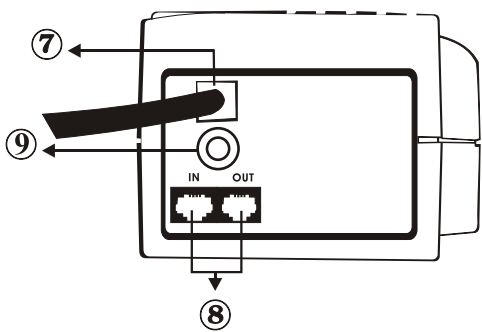
Top

1. Power On/Off Switch
2. Green LED : AC Mode
3. Yellow LED : Battery Mode
4. Red LED: Fault LED
5. Surge protected only receptacles
6. Battery power supplied receptacles



Side

7. AC Input
8. Modem/Phone Line Surge Protection
9. Circuit Breaker



Specification

| MODEL | | XP 400 | XP 600 |
|----------------------------------|---|--|--------------------------------|
| CAPACITY INPUT | VA/W | 400VA/200W | 600VA/300W |
| | Voltage | 120VAC or 220/230/240VAC | |
| | Frequency | 50/60 Hz | |
| | Phase | Single | |
| OUTPUT (Inverter Mode) | Voltage Range | 120VAC or 220/230/240VAC±10% | |
| | Frequency | 50Hz or 60Hz±1Hz | |
| | Waveform | Modified Sinwave | |
| | Transfer Time | Typical 2-6ms | |
| BATTERY | Battery type | 12V/4.5Ah*1 or equal capacity | 12V/5Ah*1 or equal capacity |
| | Recharging Time | 16 hours max.(Recharge to 90% Capacity) | |
| | Backup Time (at a PC load with monitor) | 10~15 minutes | 10~18 minutes |
| | DISPLAY | LED | Power on, Backup, Fault |
| AUDIBLE ALARM | Battery Mode | Sounding every 5 seconds | |
| | Low Battery | Sounding every second | |
| | Overload | Sounding every 0.5 second | |
| | Fault | Continuously Sounding | |
| PROTECTION | Full Protection | Overload, Overcharge, Short Circuit and Modem/Phone Line Surge Protection | |
| PHYSICAL | Dimension (DxWxH) | 300x125x85(mm) | |
| | Net Weight | 3.2kgs | 3.5kgs |
| | Outlets | 6 NEMA5-15R x 6 (3 for surge protection, 3 for battery backup) | |
| | ENVIRONMENT | Operation Temperature | 0-40°C |
| | Operation Humidity | 0-90% | |
| INTERFACE (Option) | Smart RS-232 | Support windows family, Linux, Sun Solaris, IBM-Aix, HP-UX, Compaq True64, FreeBSD, UnxiWare and MAC | |
| | USB Port | Windows 98/2000/ME/XP | |



Trouble Shooting

If the UPS failed to operate properly, please review the following points first.

| Symptom | Possible Cause | Remedy |
|---|--|--|
| Green LED is lighting, but audible alarm is heard intermittently. | 1. UPS is not connected properly to the mains. 2. Line breaker protected. | 1. Connect the UPS according to the installation guide. 2. Press the breaker. |
| UPS is functioning but audible alarm is heard continuously. | Overload of the UPS. | Verify that the load matches the UPS capacity specified in the spec. |
| UPS shuts down after a few seconds and circuit breaker protected. | UPS output is short-circuited, possibly due to defective computer. | Disconnect your computer from the UPS and then press the breaker. |

28-2MAX000005

2nd Edition, 2004

Uninterruptible Power Supply



XP UPS 400/600

www.directups.com

DIRECT UPS

YN0.LP

USER MANUAL

| Typical Runtimes in Minutes | |
|--|-----------------|
| XP 400VA Battery Runtimes with Computer System | 5-18 Minutes |
| XP 600VA Battery Runtimes with Computer System | 7-30 Minutes |

Runtime table



- To replace the batteries by qualified service personnel. Use the same number and type of sealed lead-acid batteries.

Important Safety Instructions
Save These Instructions



- Refer servicing to qualified service personnel only.
- To reduce the risk of fire or electric shock, install in a temperature and humidity controlled indoor area free of conductive contaminants.
- Risk of Electric Shock. Battery circuit is not isolated from AC input, hazardous voltage may exist between battery terminals and ground. Testing before touching.

WARNING!!!

- Risk of Electric Shock Heatsinks are live. Disconnect unit before servicing.
- Risk of Electric Shock. This unit receives power from more than one source. Disconnection of AC sources and the DC source is required to deenergize this unit before servicing.
- Risk of Electric Shock. Hazardous live parts inside this unit are energized from the battery supply even when the input AC power is disconnected.
- Risk of Electric Shock. Do not remove cover. No user serviceable parts inside. Refer servicing to qualified service personnel.
- To reduce the risk of fire, replace only with same type of fuse.
- The sum of the leakage current of the UPS and the connected equipment should not exceed 3.5mA.
- Do not dispose of batteries in a fire as they may explode.
- Do not open or mutilate the battery or batteries. Released electrolyte is harmful to the skin and eyes. It may be toxic.
- A battery can present a risk of electric shock and high short circuit current. The following precaution should be observed when working on batteries:
 - 1) Remove watches, rings or other metal objects from the handles.
 - 2) Use tools with insulated handles.
 - 3) Wear rubber gloves and boots.
 - 4) Do not lay tools or metal parts on top of batteries.
 - 5) Disconnect charging source prior to connecting or disconnecting batteries terminal.

Important Safety Instructions
Save These Instructions





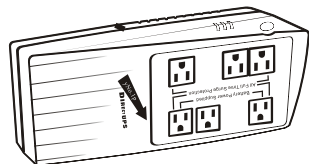
Installation and Operation

Installing the UPS is as easy as following the steps shown. Be aware that **DO NOT** plug a laser printer, copier, space heater, vacuum or other large electrical device into the UPS. The power demands of these devices will overload and possibly damage the unit.

1

Inspection

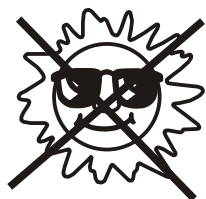
Remove the UPS from its package and inspect it for damage that may have occurred during shipping. If any damage is discovered, re-pack the unit and return it to the place of purchase.



2

Placement

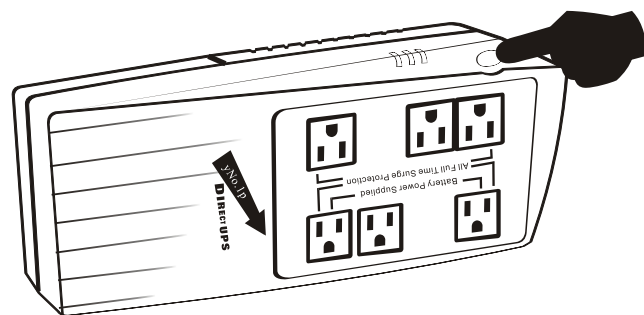
Install the UPS unit in any protected environment that provides adequate airflow around the unit, and is free from excessive dust, corrosive fumes and conductive contaminants. **DO NOT** operate your UPS in an environment where the ambient temperature or humidity is high.



7

Turn On/Off

Press power switch to turn on the UPS. Press power switch again to turn off the UPS.



8

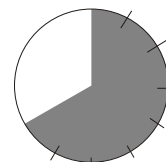
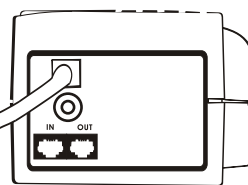
DC Start Function

DC Start Function enables UPS to be started up when AC utility power is not available and battery is fully charged. Just simply press the power switch to turn on the UPS.

3

Charging

This unit is shipped from the factory with its internal battery fully charged, however, some charge may be lost during shipping and the battery should be recharged prior to use. Plug the unit into an appropriate power supply and allow the UPS to charge fully by leaving it plugged in for at least 8-10 hours with no load (no electrical devices such as computers, monitors, etc.) connected.

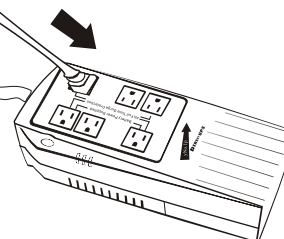


8 hours

4

Computer Connection

Connect your computer, monitor, and any externally powered data storage device (Zip drive, Jass drive, Tape drive, etc...) into one the battery supplied receptacles on the top of the UPS. The UPS provides 3 battery supplied receptacles. One of them is for adapter without blocking access to other receptacles.



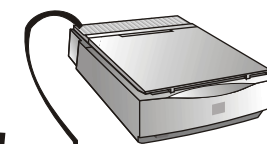
5

Peripheral Equipment Connection

Plug your peripheral equipment (printer, scanners, speakers) into the full-time surge protection outlets. One of them is for adapter without blocking access to other receptacles.



Printer



Scanner



Speaker

Note: DO NOT plug a laser printer, copier, space heater, vacuum or other large electrical device into the UPS. The power demands of these devices will overload and possibly damage the unit.

Note: DO NOT plug home theater equipments into the battery power supplied receptacles, only to surge protected only receptacles.

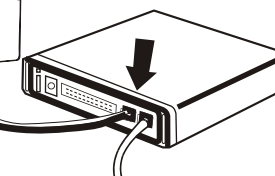
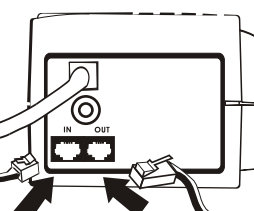
6

Modem/Phone line Connection

Plug incoming internet line into the "In" socket at the side panel of the UPS. Use one more internet line cable and plug one end of the internet line cable to the "Out" socket at the side panel of the UPS. Plug the other end of the modem input socket as shown.



Incoming Internet line



9

Battery Replacement

CAUTION: Battery replacement should be performed by qualified service personnel.

Follow the charts below to replace the batteries. Remove the screws located at the bottom of the UPS to open the battery cover.

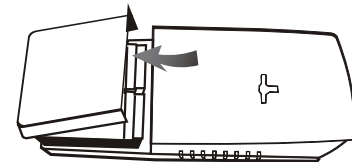


Chart 1

After removing the battery cover, gently extract batteries from the case.

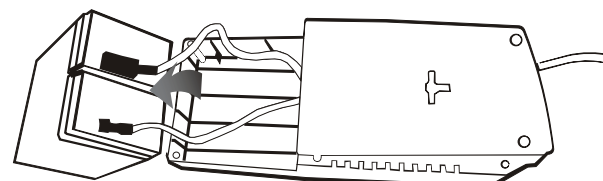


Chart 2

Disconnect the two wires connecting it to the XP UPS and replace it with the same type of batteries. Dispose of the old batteries properly at an appropriate recycling facility.

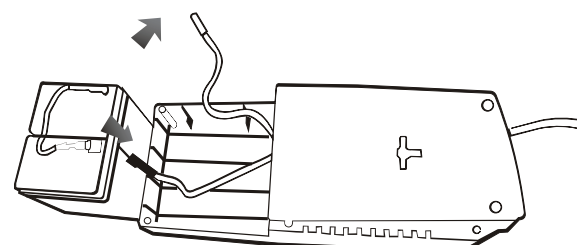
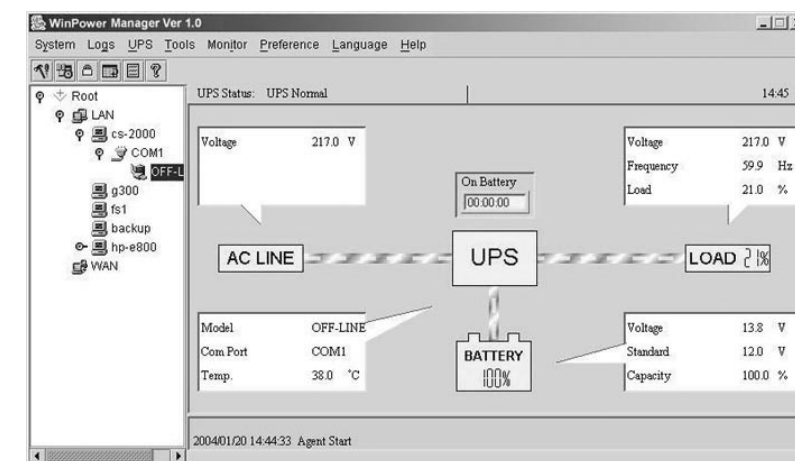


Chart 3



Free Software Download -- WinPower --

WinPower is a brand new UPS monitoring software, which provides user-friendly interface to monitor and control your UPS. This unique software provides safely auto shutdown for multi-computer systems while power failure. With this software, users can monitor and control any UPS on the same LAN no matter how far from the UPSs.



Installation procedure:

1. Go to the website: <http://www.ups-software-download.com/winpower.htm>
2. Choose the operation system you need and follow the instruction described on the website to download the software.
3. When downloading all required files from the internet, enter the serial No: 511C1-01220-0100-478DF2A to install the software.

When your computer restarts, the WinPower software will appear as a green plug icon located in the system tray, near the clock.