

Standard Operating Procedure of Firmware Reprogramming

1. Install the program software: [MGEFlashSetup3.exe](#)



MGEFlashSetup3.e
e

2. Connect the UPS to PC with RS232 cable



a.



b.



c.



d.

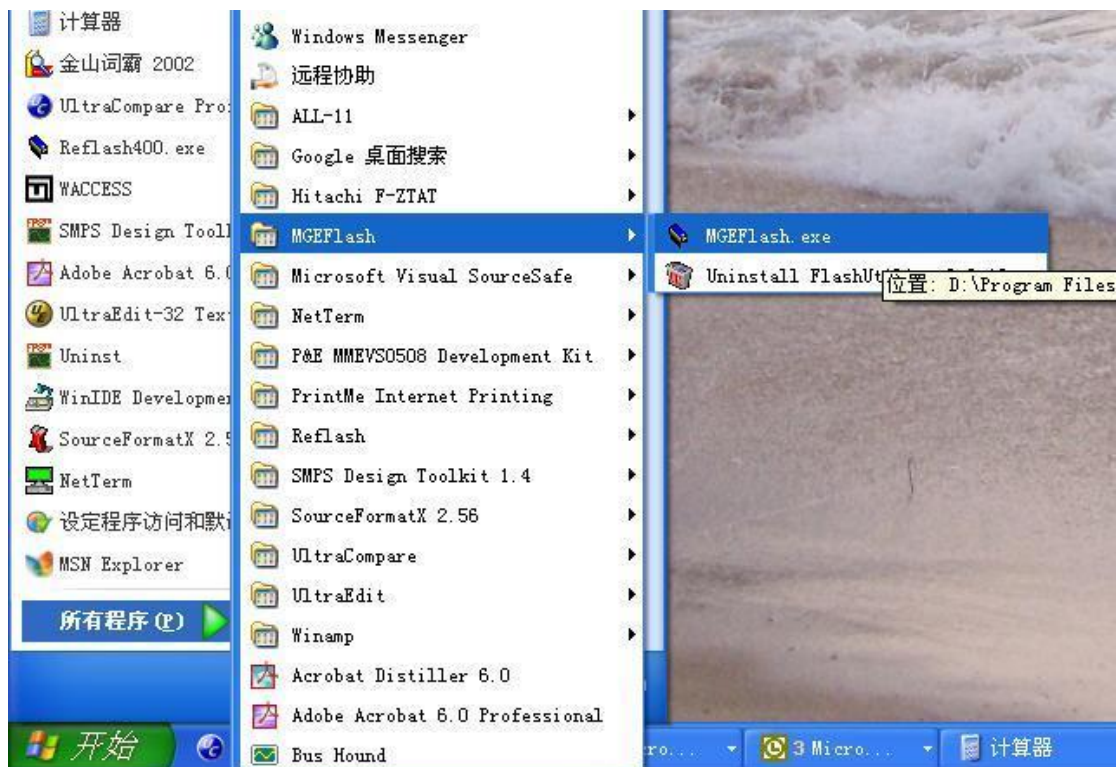
RS232 cable:



3. Connect UPS to main, **don't turn on the UPS**

4. RUN MGEFlash.exe (Path : start\ programme\ MGEFlash \MGEFlash.exe)

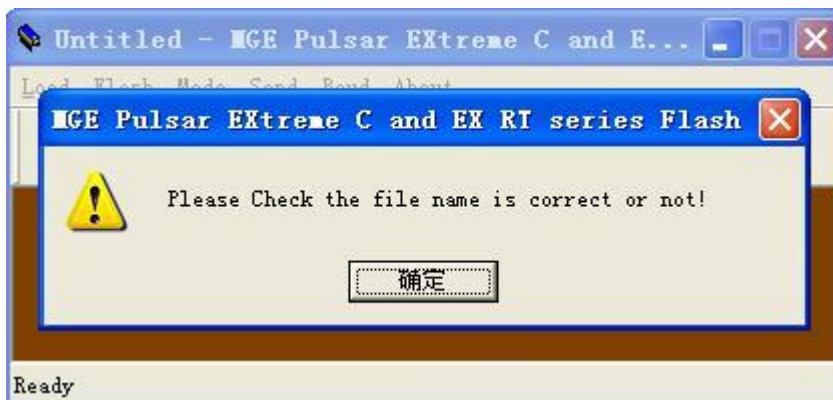
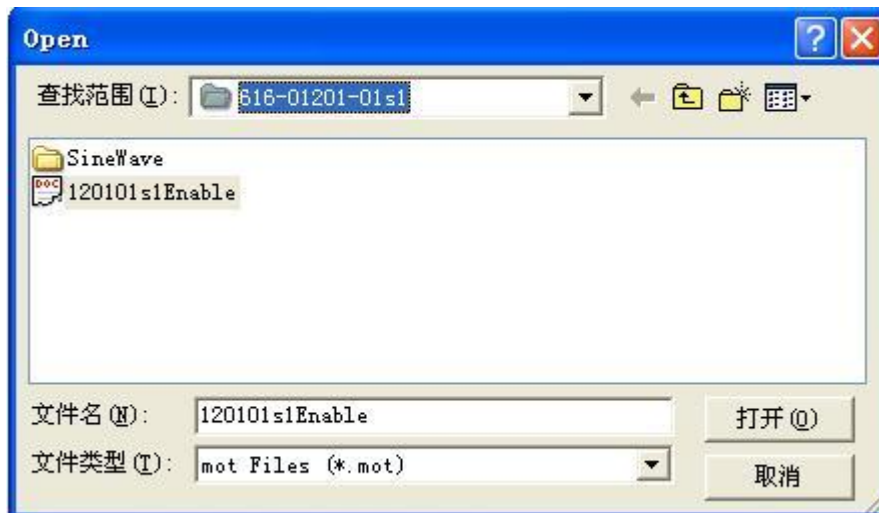
a.





b.

5. Click the button  to load the UPS firmware [120101s1Enable.mot](#)



Please click the button 



6. Click the button

Flash

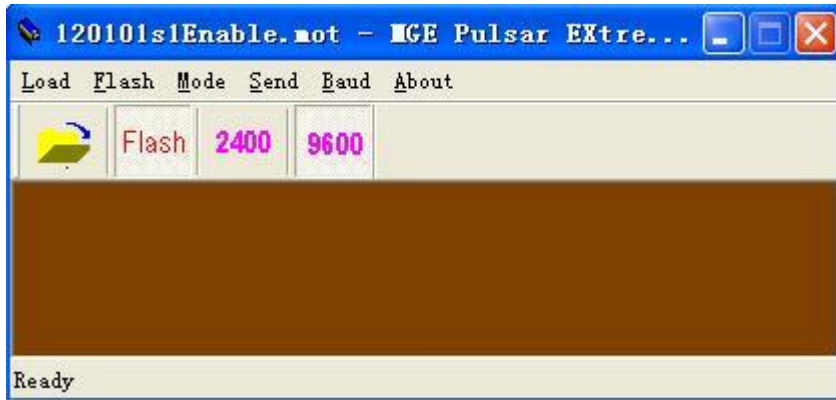


Please wait for few minutes, and **don't interrupt the process** until it is finished.




Programming successfully!

Please click the button



Pull out the RS232 cable from the UPS, and plug in RS232 cable to the next UPS (if more than 1 UPS, please proceed to the following steps).

Click the button  (always select baud rate 2400)



Click the button , then go to [step 6](#).

7. Close the program software [MGEFlash.exe](#). If any other UPS needs to be reprogrammed, pull out the RS232 cable from UPS and PC.